

The Outlet

March 2025



Scholarship Applications Due March 14, 2025

Riverland Energy will award \$1,000 scholarships to high school seniors whose parent or guardian resides in the Riverland Energy service territory.

Luck of the Draw \$5,000 Scholarship is continuing this year! We will be drawing one recipient from all applicant's present at the Annual Meeting for a \$5,000 scholarship.

Applications with details and qualifications can be found on our website. Deadline is March 14, 2025.

Spring Forward

Remember to set your clocks forward one hour.
March 9, 2025



You're Invited! Riverland Energy Annual Meeting

Riverland Energy Cooperative's Annual meeting will be held on Saturday, March 22 at the Arcadia High School, located at 756 Raider Drive. Registration and pancake breakfast will begin at 8:00 a.m.

Business Meeting

The business meeting will start at 10 a.m. in the gym. Director elections for this year will be Districts 3, 4, and 8. Visit our website for more information on the Annual Meeting and voting procedures.

Prizes & Attendance Gift

There will be door prize drawings for bill credits, a TV, and kids gift baskets. Members must be present to win. Each member account will receive an attendance gift.

Scholarship Drawings

A random drawing for scholarship awards will take place immediately following the close of the business meeting. REMINDER: Scholarship award winners or their parent or guardian MUST be present to win.



OPERATING STATISTICS

	January			
	Monthly		Year-to-date	
	2024	2025	2024	2025
KWHS PURCHASED	28,902,938	30,870,399	28,902,938	30,870,399
KWHS SOLD	27,569,408	29,695,547	27,569,408	29,695,547
REVENUE	\$4,037,144	\$4,354,543	\$4,037,144	\$4,354,543
COST OF PURCHASED POWER	\$2,295,383	\$2,396,952	\$2,295,383	\$2,396,952
OTHER EXPENSES	\$1,437,983	\$1,513,554	\$1,437,983	\$1,513,554
OPERATING MARGINS	\$303,778	\$444,037	\$303,778	\$444,037
NON-OPERATING MARGINS	\$13,114	\$9,656	\$13,114	\$9,656
CAPITAL CREDITS-ASSOC. ORGANIZATIONS	\$94,529	\$108,522	\$94,529	\$108,522
TOTAL MARGINS	\$411,421	\$562,215	\$411,421	\$562,215

TIPS TO AVOID

ENERGY SCAMS

Be cautious of fraudulent websites pretending to be an electric utility. Scammers often create look-alike sites to steal your personal or payment information. Always type your utility's official web address directly into your browser instead of clicking email or text links. Watch for signs of a secure website, such as "https://\" in the address bar and a padlock icon. If you're ever unsure, call your utility company using the official phone number listed on your bill to verify payment or account details. Stay vigilant to protect yourself from utility fraud.



ENERGY EFFICIENCY TIP OF THE MONTH

March is an ideal time to service your home cooling system, ensuring it runs efficiently when the heat of summer arrives. Routine maintenance, like cleaning or replacing filters, checking refrigerant levels and inspecting parts, can improve your system's energy efficiency and lower your energy bills. By addressing potential issues early, you can avoid costly emergency repairs and extend the lifespan of your unit. Scheduling service in the spring helps you beat the peak-season rush, giving you faster access to qualified technicians. A well-maintained cooling system can save energy and keep your home comfortable all summer long.



Right - Of - Way Maintenance Program

Our Right-of-Way maintenance program helps prevent power interruptions by trimming or removing trees and brush which could be potential fire hazards or cause power outages. Tree-to-line contact can also cause momentarily interruptions or blinks in power. Tree trimming helps prevent extended outages during storms or strong winds. Riverland rotates around the service area each year to keep up with tree growth.

In 2025, we are focusing on the Centerville, Krause, Sand Lake, Cedar Creek, Pleasantville, Gilmanton, and Tamarack substations for a total of 320 miles of line.

You may see bucket trucks from Zielie's, our tree trimming contractor, in your neighborhood. Members in those areas will receive an automated phone call when they will be in your area.

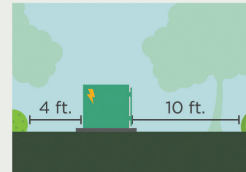
3 Ways to Help Limit Tree Trimming

Did you know electric utilities are required to trim trees and other types of vegetation that grow too close to overhead power lines? We know you love your trees, and we will do everything we can to avoid trimming them. Here's how you can help:

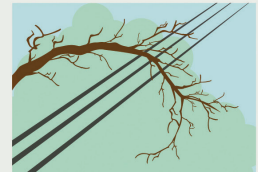
1. Plant trees in the right place. Trees that will be <40 ft. should be planted at least 25 ft. away from power lines (>40ft. should be at least 50 ft. away).



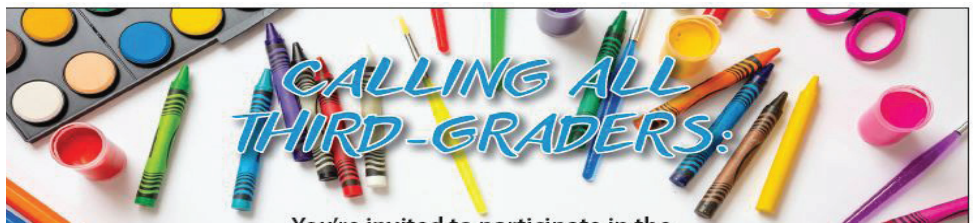
2. Don't block pad-mounted transformers. Plant shrubs at least 10 ft. away from transformer doors and 4 ft. from transformer sides.



3. Report dangerous branches. If you spot a tree or branch that is dangerously close to power lines, please let us know.



Trimming improves safety for all. Let's work together to enjoy the beauty of trees and reliable electricity.



CALLING ALL THIRD-GRADERS:

You're invited to participate in the Wisconsin Electric Cooperative Association's

ELECTRICAL SAFETY POSTER CONTEST

Submit an original poster supporting electrical safety to your local electric cooperative by April 30, 2025, for a chance to win a \$25 gift card! The top three posters will be entered into the statewide poster contest for a chance to win one of three great prizes:

- 1st place - Chromebook
2nd place - \$100 Gift Card
3rd place - \$75 Gift Card

Posters should be at least 8.5x11 inches, but no larger than 11x14 inches. Entries must include completed entry form and student's name on the back of the poster. Contact your local electric cooperative or go to www.weca.coop for registration forms.

